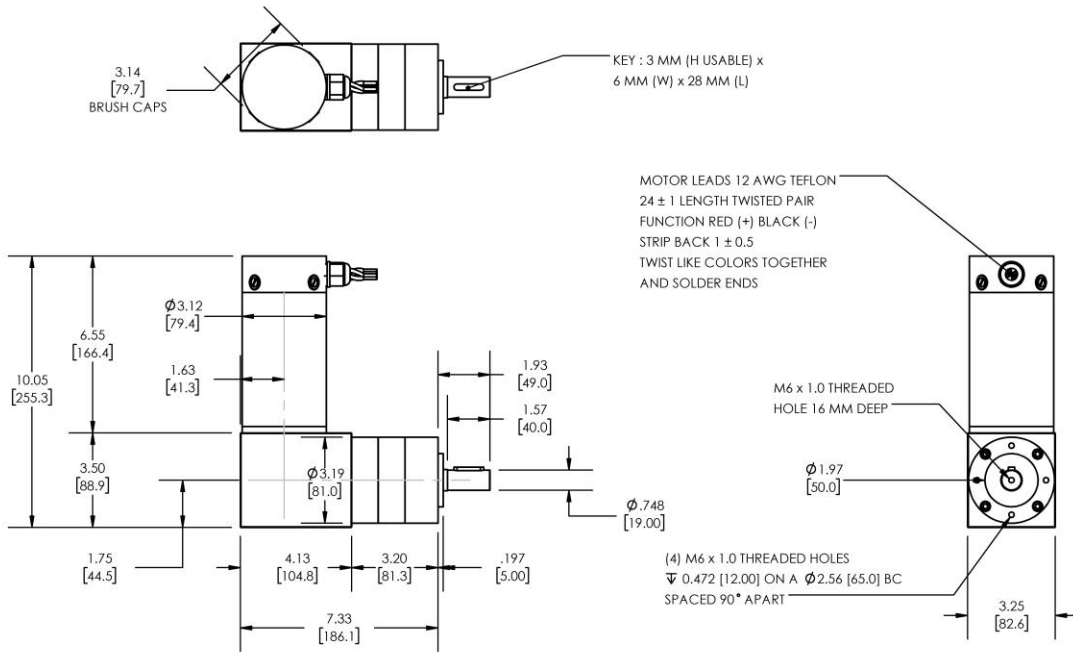


Model Number:

MMP D33-655D-36V GRA81-019



DIMENSIONS ARE INCHES [MM] UNLESS OTHERWISE STATED

PLANETARY GEARMOTOR OUTPUT PARAMETERS:	VALUE	UNITS	TOLERANCE
Gearhead Ratio (exact)	19.20 : 1		
Gearhead Shaft Output Speed (at full-load)	190	RPM	MAX
Gearmotor Rated Continuous Torque	131	In-Lbs	MAX
Gearmotor Rated Peak Torque	879++	In-Lbs	----
Gearhead Standard Backlash	33	Arc Minutes	MAX
Gearhead Efficiency	75%	----	----
Output Shaft Radial Load Capacity	135	Lbs	MAX
Output Shaft Axial Load Capacity	27	Lbs	MAX
Gearmotor Total Weight	17	Lbs	MAX

++ All Peak Torque values are dependent upon duty. Contact our sales office for details.

DC MOTOR PERFORMANCE PARAMETERS:	VALUE	UNITS	TOLERANCE
Rated DC Voltage	36	DC VOLTS	----
Rated Continuous Current	13.1	AMPERES	----
No-Load Speed	4091	RPM	MAX
Rated Speed	3657	RPM	+/- 15%
Rated Continuous Power Out	391	WATTS	+/- 15%
Rated Continuous Torque	145	OZ-IN	----
Peak Torque (motor only)	977	OZ-IN	----
No-Load Current	0.91	AMPERES	MAX
Back EMF Constant (Ke)	8.8	V/KRPM	+/- 10%
Torque Constant (Kt)	11.9	OZ-IN/AMP	+/- 10%
DC Armature Resistance	0.29	OHMS	+/- 15%
Armature Inductance	0.22	mH	+/- 15%
Armature temperature	155	DEG. C	MAX

NOTES:

- ENCODER & BRAKE OPTIONS AVAILABLE – [FOLLOW THIS LINK FOR DETAILS](#)
- NEMA MOUNTING FLANGE OPTION AVAILABLE – [FOLLOW THIS LINK FOR DETAILS](#)

MIDWEST MOTION PRODUCTS, INC

DESIGN, MANUFACTURING & DISTRIBUTION - MOTION CONTROL EQUIPMENT

www.midwestmotion.com

email: sales@midwestmotion.com